

## Manual for IBM T43-Z60

IBM notebook(T42 before) use a small eeprom to store different OEM issues like serial number, UUID, etc. The supervisor password (SVP) is stored also into this little chip.

The eeprom of **T43\R52** is in the pc8394T-VJG super i/o IC.and **R60\T60\X60\Z60\Z61** is in the other super i/o IC.use our solution,we do not need to unsolder the eeprom chip,we support the test point of every model

To unlock the password,the first problem is that you needs to read the eeprom in order to find the password string.The second is that the password is written in a special scan code,you must use a software to find the password.

### The hardware and software support:

-T43/p

-R52

-T60/p,T61,T61P

-Z60 series

-Z61 series

-R60,R60E,R61,R61I

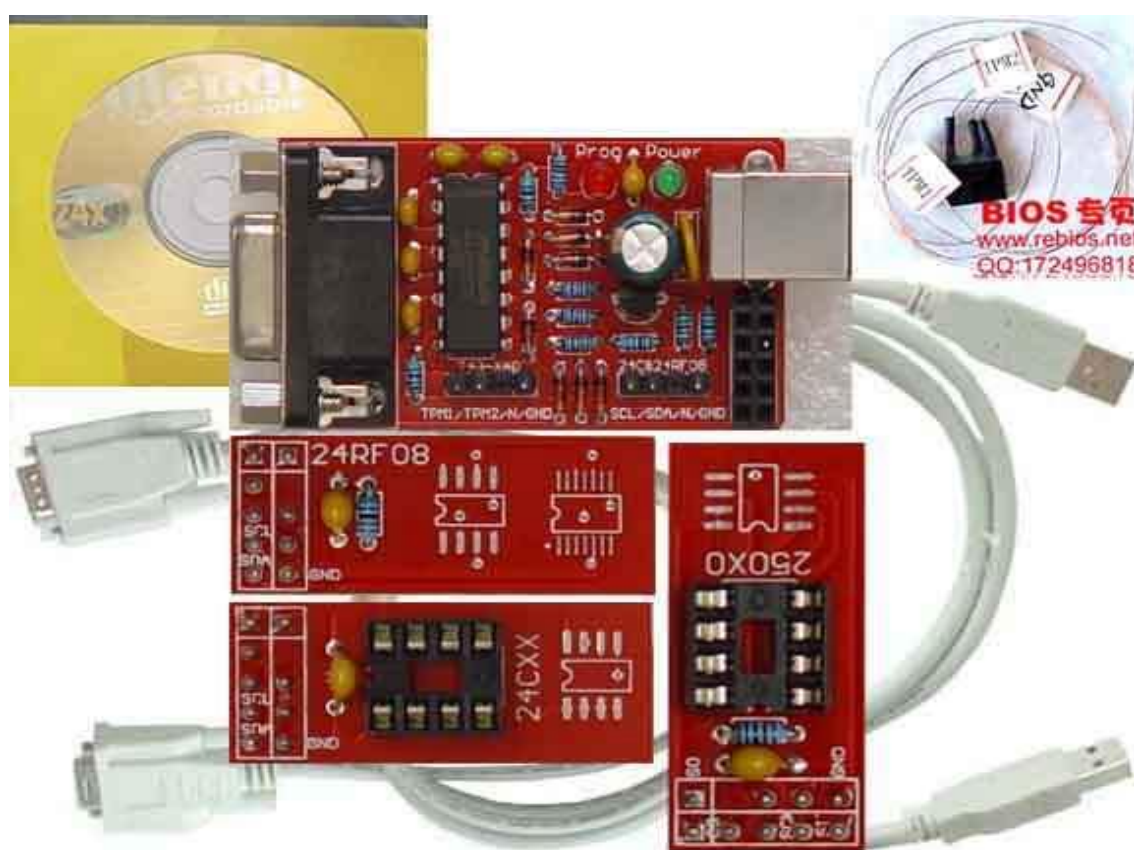
-X60,X61,X61S,X61T

To unlock the password,first,we must to read the data of eeproms,we can use the serial programming tool.second,when we have read the eeprom,and saved the data to a file,we can use the IBMpassword software to find the password.

### 1.read the data of eeprom

(1)about the programmer

To read the data of eeprom,we must use one serial programming device.



The new programmer include:mainboard of programmer,adapters,serial cable,USB cable and three wires cable. prepare your technician PC, the serial cable connect to PC Serial Port(COM1),and the USB Cable supply the power.



(2).solder

No need to unsolder the eeprom, just solder 3 wires to the test point(TPM1,TPM2 and GND) of mainboard. we support test point picture of T43\R52\R60\T60\Z60 .....,you do not care where the password eeprom is,just solder the wires to the test point.Once again, be careful and double, triple check the soldering if necessary till you are positively sure you have done the right job.The three wires cable will be connected later to the programmer.



(3)regist the ribmtpm.exe and wibmtpm.exe

Ribmtpm.exe:the software to read the data of eeprom.

Wibmtpm.exe: the software to write data to eeprom.

Run the ribmtpm.exe or wibmtpm.exe,email the hardware id to me,and I will give you the name and key.

**IBM TPM reader**  
www.rebios.net

Enter the registration and key below,exactlyas given to you.

Registration name:

Hardware ID:

Serial number:

(4)read the data of eeprom

Turn on the ThinkPad.When you are prompted for the password and there 's no other activity like HDD access or so, connect the three wires cable to programmer(TPM1\TPM2\NC\GND),connect the USB cable to programmer,and the green LED light..

start-run,input the command line parameters

```

IBM TPM reader 1.0
Copyright (C)www.rebios.com QQ:172496818

Usage: ribmtpm <filename>

filename Specifies a file to store the binary.
Hit <Enter> to exit...

```

for example:ribmtpm aa.bin

```

IBM TPM reader 1.0
Copyright (C) www.rebios.net QQ:172496818

-----
Initializing timer...23704 OK!
Reading device...
>>>>>>>
Done.
Data saved in aa.bin
-----
Hit <Enter> to exit...

```

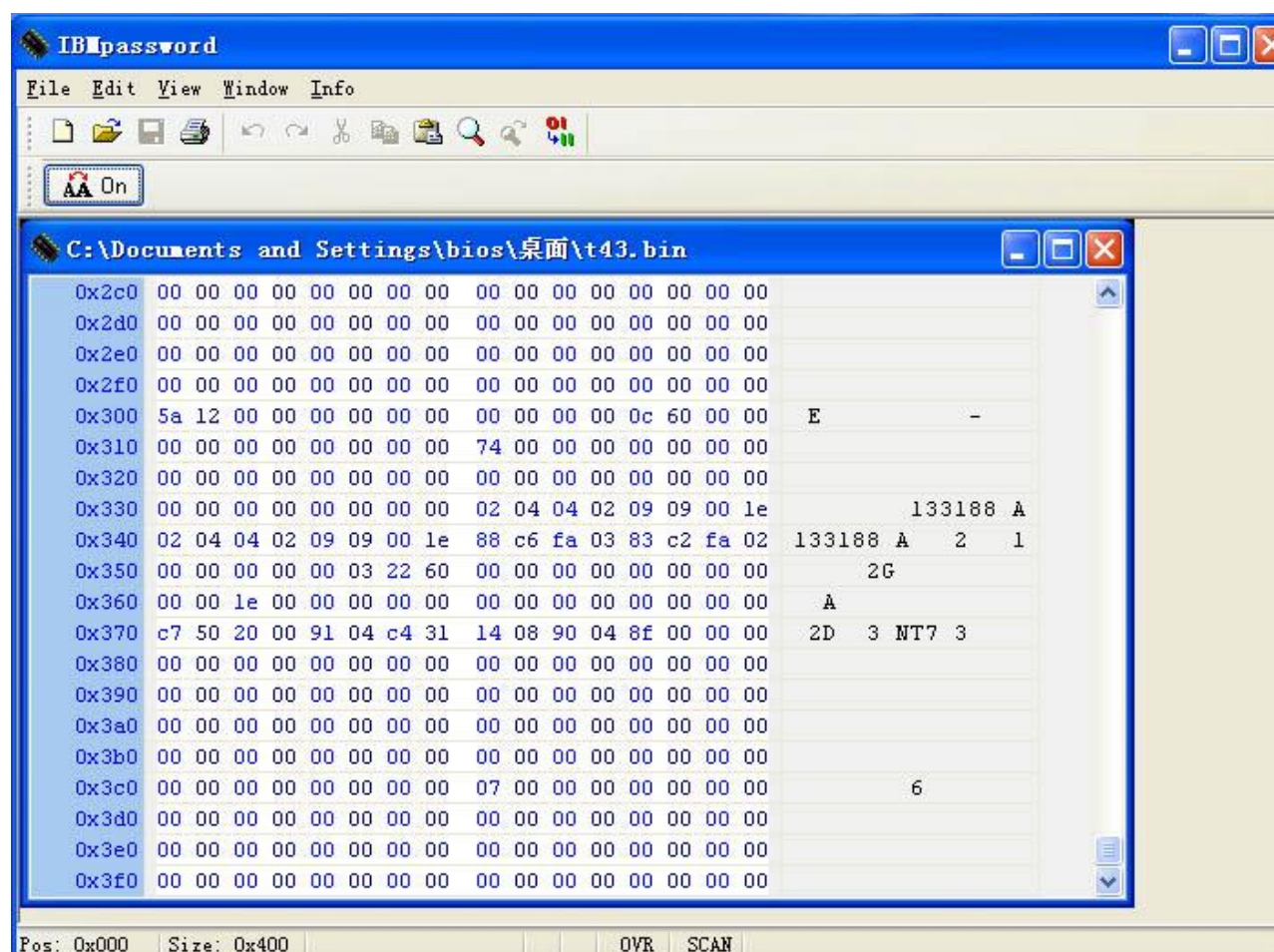
The file should be created in the same folder. Finally, disconnect the wires (GND last!) and turn off the ThinkPad by pressing on/off switch.

## 2.Reveal the password

Now, you have the .bin file but you need to dump in scan code to retrieve the password. IBMpassword 2.0 Lite is a tool for this job. Just open the eeprom dump you've created before and search for 0x330, 0x340 lines. The password is located on 0x338 (and 0x340 depending on model) in scancode.If the password won't work for the very first time then your eeprom may use newer IBM encryptions. In this case switch to alternate scancodes to find it.

IBMpassword 2.0 Lite is a windows software. Run this software.and open the data that you have read.

presses " AA off " button,then we can find the password in 0x338:



## 3.write the data to eeprom

sometimes,we must write a data to eeprom,use wibmtpm.exe

start-run,input the command line parameters



(3)eeprom is not available

```
ERROR: Eeprom not available!
-----
Hit <Enter> to exit...
BIOS 专区
www.rebios.net
QQ:172496818
```

If you are prompted with "eeprom not found",it is a problem with the wires. Check them again (TPM1,TPM2 and GND) even that seems to be OK, you never know...

Input command line parameters (switches) error,there is a space between the command line parameters.

(4) Unknown eeprom dump,wrong file size!

```
24RF08 eeprom writer v2.0b - Win32 Console Version
Copyright (C) Victor Voinea, www.rebios.net
-----
Initializing timer...22895 OK!
ERROR: Unknown eeprom dump. Wrong file size!
-----
Hit <Enter> to exit...
BIOS 专区
www.rebios.net
QQ:172496818
```

The size of file write to eeprom is error,it must be 1Kb.

**5.test point for 43-Z60**